

Fall Vegetable Garden What Kind of Garden?

Row Plantings

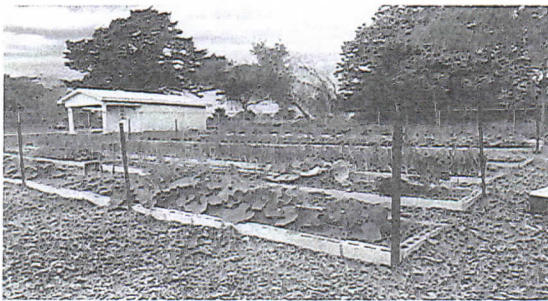


Raised Bed Planting



1

Pecan Creek Haven Section A Garden



2

Vegetable Gardening General Guidelines

- ❖ Proper Soil Preparation & Fertilization
- ❖ Select Recommended Varieties
- ❖ Plant at the Right Time
- ❖ Adequate Soil Moisture
- ❖ Control Weeds, Disease, & Insects
- ❖ Harvest at the Right Time

3

Fall Vegetable Garden

Positives of Fall Gardening

- > Plants grow slower with cooler temperature
- > Harvesting is slower pace
- > Cooler temperatures add crispness & sweetness
- > Abundance of interesting plants to try
- > Can try some Spring crops that performed poorly

Negative of Fall Gardening

4

Preparing the Soil in July & August



5

Nine Vegetable Families

- | | |
|------------------------------------|-------------------------------------|
| <input type="checkbox"/> Composite | <input type="checkbox"/> Mustard |
| <input type="checkbox"/> Grass | <input type="checkbox"/> Nightshade |
| <input type="checkbox"/> Goosefoot | <input type="checkbox"/> Parsley |
| <input type="checkbox"/> Legume | <input type="checkbox"/> Squash |
| <input type="checkbox"/> Lily | |

6



Fall Vegetable by Family Important for Crop Rotation

- Composite: Lettuce, Jerusalem Artichoke
- Goosefoot: Beets, Spinach, Swiss Chard
- Legume: Beans, Peas: English, Sugar Snap, Snow
- Lily: Asparagus, Garlic, Onions, Chives, Leeks, Shallots
- Mustard: Broccoli, Brussel Sprouts, Cabbage, Kale
Cauliflower, Collards, Radish, Kohlrabi, Turnips, Radish
- Nightshade: Tomatoes, Peppers, Potatoes
- Parsley: Carrots, Celery, Parsnips

Plant a Family in same bed only every 3-4 years
Rotation helps prevent insects & disease from building up

7



Grouping Fall Vegetables Fertilizer Requirements

- Heavy Feeders (3.0 lbs./100 sq ft)
 - > Lily Family: Asparagus,
 - > Mustard Family: Broccoli, Brussel Sprouts, Cabbage, Cauliflower, Collard, Kale, Kohlrabi
 - > Goosefoot Family: Spinach, Beets
- Medium Feeders (2.0 lbs./100 sq ft)
 - > Composite Family: Lettuce, Artichoke
 - > Mustard Family: Radish
- Light Feeders (1.0 lbs./100 sq ft)
 - > Parsley Family: Carrots, Celery, Parsnips
 - > Lily Family: Onions, Garlic, Chives, Leeks, Shallots
 - > Mustard Family: Mustard, Swiss Chard, Turnips
 - > Goosefoot Family: Swiss Chard
 - > Legumes: Beans, Peas: English, Sugar Snap, Snow

8



Fall Vegetable Garden August Schedule

- ❖ Aug 1 – Aug 15: Peas: English, Sugar Snap, Snow
- ❖ Aug 1 – Sept 10: Summer Squash
- ❖ Aug 1 – 21: Fall Tomatoes (Transplants)
- ❖ Aug 15 – Sept 15: Green Beans, Lima Beans
- ❖ Aug 20 – Sept 1: Irish Potatoes

9



Fall Vegetable Garden September – October Schedule

- ❖ Sept 1 – Oct 31:
 - Composite: Artichokes,
 - Goosefoot: Beets, Swiss Chard,
 - Parsley: Carrots, Celery,
 - Mustard: Broccoli, Brussel Sprouts, Cabbage,
Kale, Cauliflower, Collards, Radish, Kohlrabi,
Turnips, Asian Greens
- ❖ Sept 15 – Oct 31
 - Lily: Green Onion, Shallots, Garlic

10



Fall Vegetable Garden October Schedule

- ❖ Legume: Fava Beans
- ❖ Lilly: Garlic (Oct-Nov)
- ❖ Composite: Lettuce (Oct-Feb)
- ❖ Goosefoot: Spinach (Oct-Feb)

11



Winter Vegetable Garden November – December Schedule

- ❖ Mustard: Asian Greens, Kale, Collards,
Radish,
- ❖ Lily: Lettuce (plant every 2-3 wks.)
- ❖ Goosefoot: Spinach (Nov-Feb)

12



Winter Vegetable Garden January – February Schedule

- ❖ Lily: Asparagus, Onions, Leeks,
- ❖ Composite: Artichokes (crowns), Lettuce
- ❖ Goosefoot: Beets, Spinach, Swiss Chard
- ❖ Mustard: Broccoli, Cabbage, Cauliflower, Collards,
Asian Greens, Kale, Kohlrabi, Radish, Turnips
- ❖ Parsley: Carrots
- ❖ Nightshade: Potatoes (Feb)

13



Fall Vegetable Garden Seed or Transplant?

- ❖ Fall Vegetables Best by Seeds
 - Composite: Lettuce
 - Goosefoot: Beets, Spinach, Swiss Chard
 - Legume: Beans, Peas: English, Sugar Snap, Snow
 - Mustard: Mustard Greens, Collards, Radish, Turnips
 - Parsley: Carrots
- ❖ Fall Vegetables Best by Transplants
 - Composite: Lettuce, Artichoke
 - Goosefoot: Swiss Chard,
 - Lily: Garlic, Onions, Leeks, Chives
 - Parsley: Celery
 - Mustard: Broccoli, Brussel Sprouts, Cabbage, Chinese Cabbage,
Cauliflower, Kale, Kohlrabi,

14



Earth-Kind® Environmental Stewardship

- ❖ Earth-Kind combines the best principles:
 - Traditional/Conventional Gardening
 - Natural/ Organic Gardening
- ❖ Earth-Kind Encourages:
 - Water Conservation
 - Landscaping for Energy Conservation
 - Reduce Use of Fertilizer, Herbicides, Pesticides
 - Reduce of yard wastes entering landfills

15



Seven Earth Kind® Principles

- ❖ Planning & Design
- ❖ Practical Turf Areas
- ❖ Soil Analysis & Preparations
- ❖ *Appropriate Plant Selection*
- ❖ Efficient Irrigation & Rainwater Harvesting
- ❖ Effective Use of Mulches
- ❖ Appropriate Maintenance

16



Texas SuperStar® Vegetables

Spring Vegetables

- ❖ Tomatoes (8 Varieties)
 - Celebrity
 - Tycoon
 - Valley/ Bob Cat (Heat)
 - Ruby Crush
 - Surefire (Heat)
 - Merced
 - BHN 444
 - Sunpride (Heat)
- ❖ Peppers (3 varieties)
 - Basket of Fire
 - Purple Flash
 - Nu Me Twilight

Fall Vegetables

- ❖ Broccoli
 - Green Comet
 - Green Magic
- ❖ Onions
 - 1015Y Sweet Onion
 - Texas Legend Onion

17



Vegetable Varieties

- ❖ Vegetable Variety Selector (tamu.edu)
- ❖ https://aggiehort.tamu.edu/publications/veg_variety/select.php

18
